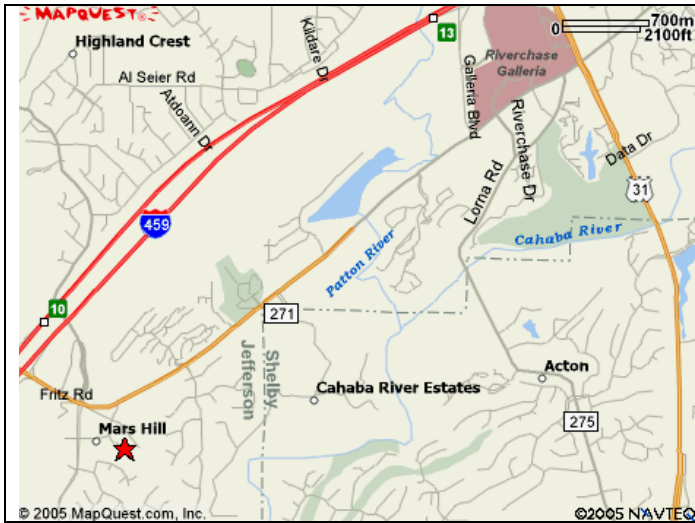


**Driving Directions**  
**Odyssey Early Schools – Trace Crossings**  
**401 Emery Drive**  
**Hoover, Alabama 35244**  
**(205) 988-8829 Phone**



**From Hoover:**

- Take Highway 31 South towards the Galleria
- Get on I-459 South towards Tuscaloosa
- Take Exit 10 – Highway 150 and turn left at the end of the exit ramp, going back under I-459
- After going under I-459, take a right at the 3<sup>rd</sup> light onto Stadium Trace Parkway
- After about 100 yards, take a left through the median onto Emery Drive
- Go 3/10ths of a mile to the cul-de-sac at the bottom of Emery Drive
- Reserved visitor parking spaces are marked on the left, immediately after entering the lot, or you can use the covered entrance if it's raining

**From Bessemer:**

- Get on I-459 North towards Birmingham
- Take Exit 10 – Highway 150 and turn right at the end of the exit ramp, going away from I-459
- Take a right at the 2<sup>nd</sup> light onto Stadium Trace Parkway
- After about 100 yards, take a left through the median onto Emery Drive
- Go 3/10ths of a mile to the cul-de-sac at the bottom of Emery Drive
- Reserved visitor parking spaces are marked on the left, immediately after entering the lot, or you can use the covered entrance if it's raining

**From I-65:**

- Head towards I-459
- Get on I-459 South towards Tuscaloosa
- Take Exit 10 – Highway 150 and turn left at the end of the exit ramp, going back under I-459
- After going under I-459, take a right at the 3<sup>rd</sup> light onto Stadium Trace Parkway
- After about 100 yards, take a left through the median onto Emery Drive
- Go 3/10ths of a mile to the cul-de-sac at the bottom of Emery Drive
- Reserved visitor parking spaces are marked on the left, immediately after entering the lot, or you can use the covered entrance if it's raining

**From Pelham/Alabaster:**

- Take Highway 31 North towards The Galleria
- Turn left onto John Hawkins Parkway (Highway 150) at The Galleria
- Drive approximately 3 miles
- After passing Hunter Street Baptist Church, take a left turn at the light onto Stadium Trace Parkway
- After about 100 yards, take a left through the median onto Emery Drive
- Go 3/10ths of a mile to the cul-de-sac at the bottom of Emery Drive
- Reserved visitor parking spaces are marked on the left, immediately after entering the lot, or you can use the covered entrance if it's raining

**From Trussville:**

- Get on I-459 South towards Tuscaloosa
- Take Exit 10 – Highway 150 and turn left at the end of the exit ramp, going back under I-459
- After going under I-459, take a right at the 3<sup>rd</sup> light onto Stadium Trace Parkway
- After about 100 yards, take a left through the median onto Emery Drive
- Go 3/10ths of a mile to the cul-de-sac at the bottom of Emery Drive
- Reserved visitor parking spaces are marked on the left, immediately after entering the lot, or you can use the covered entrance if it's raining