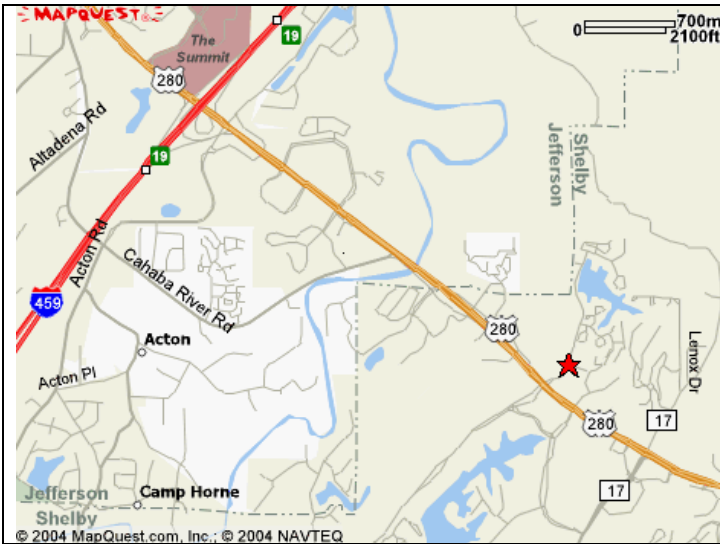


Driving Directions
Odyssey Early Schools – Inverness
104 Heatherbrooke Park Drive
Birmingham, Alabama 35242
(205) 991-0039 Phone



From Birmingham Via Highway 280:

- Take Highway 280 East towards The Summit
- Pass The Summit and I-459
- After passing over I-459, stay on Hwy 280 East for another 2 miles
- Turn left onto Inverness Parkway East at the light at the Wendy's restaurant
- Stay straight about 200 yards between the two shopping centers and take the first street right onto Heatherbrooke Park Drive
- Go all the way to the bottom of the cul-de-sac and enter Odyssey's parking lot on the left – reserved visitor parking spaces are on the left side of the lot

From Chelsea:

- Take Highway 280 West towards Birmingham
- Get in right lane after passing Valleydale Rd.
- At second light (at the Wendy's Restaurant), take a right turn onto Inverness Parkway East
- Stay straight about 200 yards between the two shopping centers and take the first street right onto Heatherbrooke Park Drive
- Go all the way to the bottom of the cul-de-sac and enter Odyssey's parking lot on the left – reserved visitor parking spaces are on the left side of the lot

From I-65:

- Take I-65 to I-459 North
- From I-459 North, take Hwy 280 East to Childersburg
- Stay on Hwy 280 East for 2 miles
- Turn left onto Inverness Parkway East at the light at the Wendy's restaurant
- Stay straight about 200 yards between the two shopping centers and take the first street right onto Heatherbrooke Park Drive
- Go all the way to the bottom of the cul-de-sac and enter Odyssey's parking lot on the left – reserved visitor parking spaces are on the left side of the lot

From Trussville:

- Get on I-459 South
- Take the Mt. Brook / Childersburg Exit
- Stay left on that exit ramp to Hwy 280 East
- Stay on Hwy 280 East for 2 miles
- Turn left onto Inverness Parkway East at the light at the Wendy's restaurant
- Stay straight about 200 yards between the two shopping centers and take the first street right onto Heatherbrooke Park Drive
- Go all the way to the bottom of the cul-de-sac and enter Odyssey's parking lot on the left – reserved visitor parking spaces are on the left side of the lot